

# British Silver Date Letter Marks

## SilverMine Date Letter Decoder

Select a town by clicking on an image below, holding the mouse pointer over the image will show a description of the mark. Your browser must support frames (IE3 or Nav3 or better) . Internet Explorer in full screen mode and a screen resolution of 1024 x 768 is recommended. It must be remembered that the images of the marks are just a computer rendering of drawings of the actual marks. They are intended only as a guide to the approximate shield or cartouche shape and the style of the lettering.

<p><b>London</b> 1558 - 1999</p>			
<p><b>Birmingham</b> 1773 - 1999</p>			
<p><b>Sheffield</b> 1773 - 1999</p>			
<p><b>Edinburgh</b> 1681 - 1999</p>			
<p><b>Chester</b> 1701 - 1961</p>			
<p><b>Exeter</b> 1701 - 1883</p>			
<p><b>glasgow</b> 1681 - 1964</p>			
			

**Newcastle**  
*1702 - 1884*

**York**  
*1559 - 1857*





SilverMine

# British Silver Marks London 1558 - 1999



1558 - 1716

1716 - 1856

1856 - 1999

Assay marking began in London in 1327. The date letter was changed in May until the Hallmarking Act of 1975 when it (along with all other remaining British date letter sequences) changed in January. Between 1697 and 1716 the higher Britannia standard (95.8 or 958 parts per 1000) was introduced and this was marked with a figure of Britannia and a lion's head erased.



SilverMine

# British Silver Marks

## Birmingham 1773 - 1999

Find any book -anytime.  
[amazon.co.uk](http://amazon.co.uk)



1773 - 1900

1900 - 1999

Assay marking began in Birmingham in 1773. The date letter was changed in July until 1975 when it (along with all other British date letter sequences) changed in January. The Britannia figure was used in silver of 95.84% purity.



SilverMine

# British Silver Marks Sheffield 1773 --1999



[1773 - 1893](#)



[1893 - 1999](#)

The Sheffield Assay Office was founded (along with Birmingham) in 1773. The Town Mark of a crown (sometimes in the same punch as the date letter on smaller wares and jewellery) was changed to a Tudor rose in 1975 with the harmonisation of British Assay Offices. The date letter was changed in July until that time when it (along with the other Assay Office date letters) changed in January. Note that the date letters did not follow an alphabetic sequence until 1824. .



SilverMine

# British Silver Marks Edinburgh 1681 - 1999



[1681 - 1780](#)

[1780 - 1906](#)

[1906 - 1999](#)

Plate was marked at Edinburgh from 1457 onwards. Date letters started in 1681. Prior to this date, a "Deacons mark" was stamped on the piece, to be replaced by the Assay Masters mark. This practice continued until 1759 when it was replaced by a Thistle mark. The Thistle mark continued until 1975 when it was replaced by a Lion Rampant. The date letter was changed in October until the Hallmarking Act of 1975 when it (along with all other remaining British date letter sequences) changed in January.



SilverMine

# British Silver Marks Chester 1701 - 1961



[1701 - 1797](#)



[1797 - 1884](#)



[1884 - 1961](#)

Plate was assayed at Chester from the early 15th century. Marks were regulated from about the end of the 17th century. The Chester office was re-established in 1701 and closed in 1961. Prior to the establishment of the Birmingham Assay Office in 1773, most of the plate produced in the Midlands and the north west of England was "touched" at Chester. The date letter was changed in July.



SilverMine

# British Silver Marks

## Exeter 1701 - 1883



[1701 - 1797](#)

[1797 - 1884](#)

The making of wrought silver was recorded in Exeter in the Middle Ages. the Roman capital letter "X", sometimes crowned, was used as a town mark in the 16th and 17th centuries. From 1701 the Town Mark of a three towered turreted castle was used with the re-establishment of the Assay Office which closed in 1883. The date letter sequence started in November 1701, then changed annually in August from 1702.





SilverMine

# British Silver Marks Glasgow 1681 - 1964



[1681 - 1871](#)

[1871 - 1964](#)

The Glasgow Assay Office was established in 1819. A date letter was used on wrought silver from 1681 to 1710 then discontinued until 1819. During this time the letters "S" (sometimes reversed), "E", "F" and "O" were used. The date letter was changed annually in July. The Assay Office closed in 1964.



SilverMine

# British Silver Marks Newcastle 1702 - 1884



[1702 - 1791](#)

[1791 - 1884](#)

Goldsmiths have been recorded working in Newcastle from the 13thC. Some late 17thC examples have a single castle as a "town" mark, and a lion passant. Later, the town mark of three separate castles was used. The Assay Office was re-established in 1702 although the early date letters were not consistently carried on. The Assay office was finally closed in 1884.



SilverMine

# British Silver Marks

## York 1559 - 1857



[1559 - 1700](#)



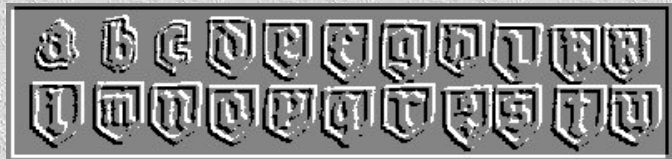
[1700 - 1857](#)



Goldsmiths have been recorded working in York as early as 1270. It was granted its own Assay Office by the act of 1423 when the town mark of half leopard's head/half fleur-de-lys was instituted. The date letter was introduced in 1560, and between 1632 and 1698 the town mark changed to half rose crowned/half fleur-de-lys. This in turn gave way in 1701 to a cross charged with five lions passant taken from the arms of the city. In 1716 the Assay office closed, and until it reopened in 1776, York silver was "touched" at Newcastle. The Assay Office finally closed in 1857.

# 1558 - 1716

1558 - 1578



1578 - 1598



1598 - 1618



1618 - 1638



1638 - 1658



1658 - 1678



1678 - 1697



1697 - 1716





# 1716 - 1856

1716 - 1736



1736 - 1756



1756 - 1776



1776 - 1796



1796 - 1816



1816 - 1836



from  
1822



1836 - 1856



# 1856 - 1999

1856 - 1876



1876 - 1896



1896 - 1916



1916 - 1936



1936 - 1956



1956 - 1974



1975 - 1999



## 1773 - 1900

1773 - 1798



1798 - 1824



1824 - 1849



1849 - 1875



1875 - 1900





# 1900 - 1999

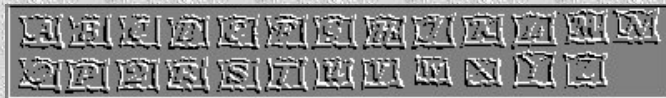
1900 - 1925



1925 - 1950



1950 - 1974



1975 - 1999





## 1773 - 1893

1773 - 1799



1799 - 1824



1824 - 1844



1844- 1868



1868 - 1893



# 1893 - 1999

1893 - 1918



1918 - 1943



1943 - 1968



1968 - 1974



1975 - 1999



# 1681 - 1780

1681

-  
1705



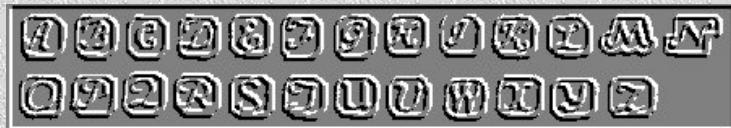
1705

-  
1730



1730

-  
1755



1755

-  
1780

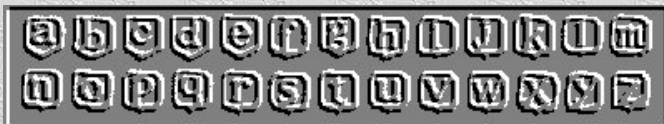


# 1780 - 1906

1780 - 1806



1806 - 1832



1832 - 1857



1857 - 1882



1882 - 1906



# 1906 - 1999

1906 - 1931



1931 - 1956



1956 - 1974



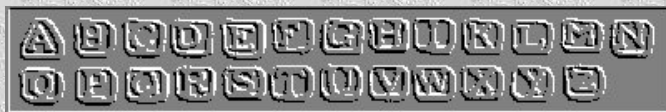
1975 - 1999



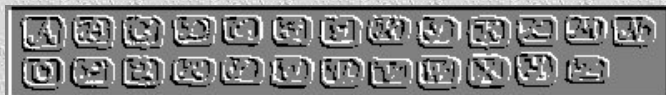


# 1701 - 1797

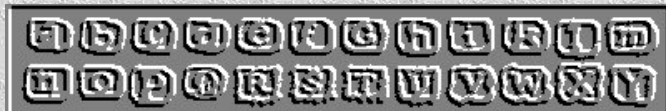
1701- 1726



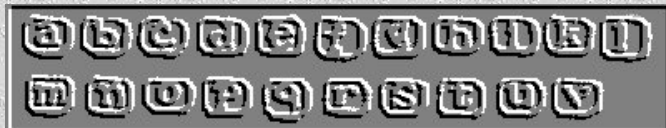
1726 - 1751



1751 - 1776

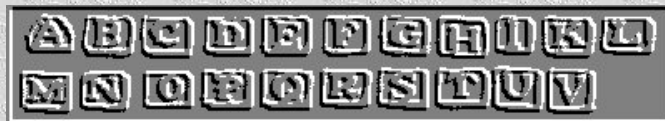


1776 - 1797

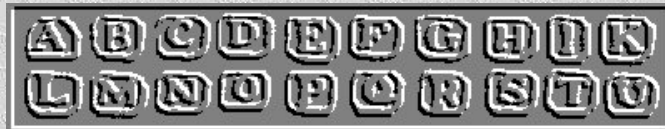


# 1797 - 1884

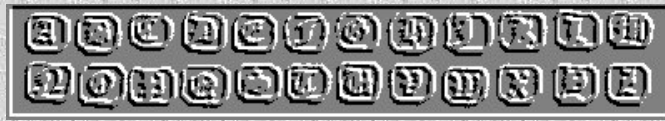
1797- 1818



1818 - 1839



1839 - 1864



1864 - 1884



# 1884 - 1961

1884 - 1901



1901 - 1926



1926 - 1951



1951 - 1961



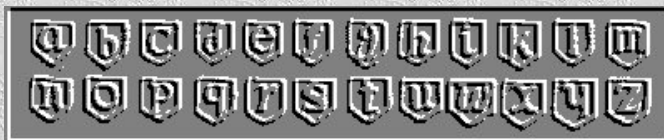


# 1701 - 1797

1701- 1725



1725 - 1749



1749 - 1773



1773 - 1797

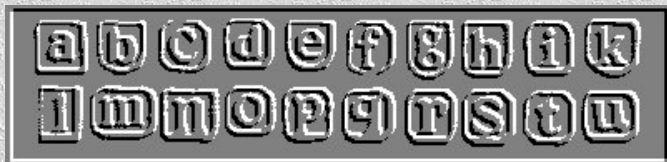


# 1797 - 1883

1797 - 1817



1817 - 1837



1837 - 1857



1857 - 1877



1877 - 1883



# 1681 - 1871

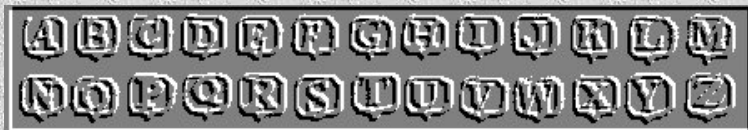
1681 - 1706



1706 - 1710



1819 - 1845

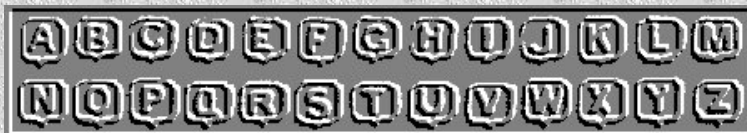


1845 - 1871



# 1871 - 1964

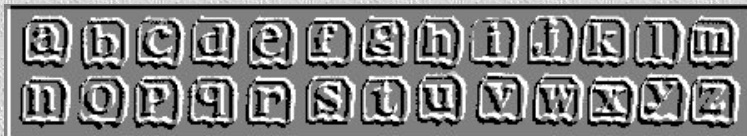
1871 - 1897



1897 - 1923



1923 - 1949



1949 - 1964



## 1702 - 1791

1702 -  
1721



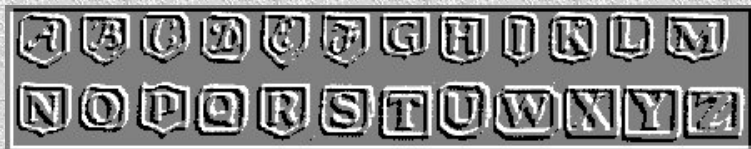
1721 -  
1740



1740 -  
1759



1759 -  
1791



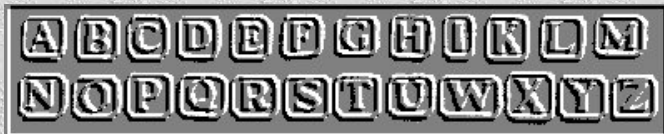


# 1791 - 1884

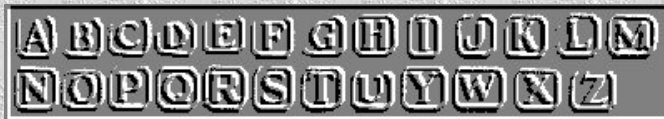
1791 - 1815



1815 - 1839



1839 - 1864



1864 - 1884



# 1559 - 1700

1559 - 1583



1583 - 1607



1607 - 1631



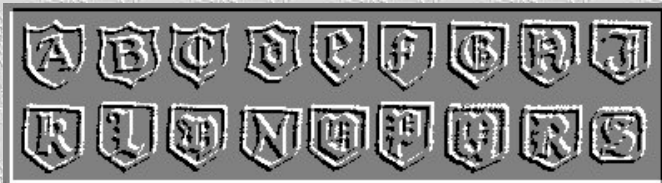
1631 - 1657



1657 - 1682



1682 - 1700



# 1700 - 1857

1700 - 1707



1776 - 1787



1787 - 1812



1812 - 1837



1837 - 1857

