



THE GOLDSMITHS' COMPANY

ASSAY OFFICE  
LONDON

YOUR CENTRE FOR EXCELLENCE

INFORMATION ON THE  
CASE RELATING TO  
PETER ASHLEY - RUSSELL



# CONTENTS

INTRODUCTION.....	3
INDEX OF PHOTOGRAPHS/ILLUSTRATIONS.....	4
ILLUSTRATIONS OF ITEMS WITH HALLMARKS...	5-44
EXAMPLES OF FAKE PUNCHES: LEOPARD'S HEAD AND LION PASSANT.....	45
EXAMPLES OF FAKE PUNCHES: LION'S HEAD ERASED AND BRITANNIA.....	46
EXAMPLES OF FAKE PUNCHES: DATE LETTERS.....	47-50
EXAMPLES OF FAKE PUNCHES: SPONSOR'S MARKS.....	51-54

## ASHLEY-RUSSELL FAKES AND FORGERIES CASE

At the Snaresbrook Crown Court in London on Thursday 25 September 2008, Mr. Peter Ashley-Russell was sentenced to a total of three years' imprisonment for offences under the Forgery Act 2006, four offences relating to the faking and forging of antique silver.

Mr. Ashley-Russell was responsible for the faking and forging of 39 antique spoons, forks, coffee pots and a tazza made of silver. The fraudulent activities included conversion of spoons to forks to increase their value and the application of fake hallmarks using imitation punches that Mr. Ashley-Russell had forged.

The prolific number of fraudulent spoons produced and the high market value these items would have fetched on the open market make this case one of the most significant involving hallmarking deception in the past century. Prior to this, the most notable prosecution was the infamous Lyon and Twinam case, whereby Reuben Lyon and Charles Twinam were found guilty of forging silver in the 1890s. The Worshipful Company of Goldsmiths also played an active role in authenticating confiscated exhibits and providing expert evidence in this landmark trial.

There are several aspects of the Ashley-Russell case which represent significant changes in the way that the faking of antique silver is now attempted, the first of which is the high quality of the workmanship in the manufactured punches leading to particularly authentic looking hallmarks on the forged articles. Secondly, the detail of the false patination and engraving on each spoon was at a higher level of skill and competence than has been seen previously. Finally, extensive use was made of internet auction sites to distribute these articles. The collection of seized goods, which includes the fake punches used and articles in the process of being forged, is a unique and invaluable educational resource.

The following pages include an index and illustrations of 40 items which Peter Ashley-Russell faked or was in the process of faking.

**ANY SUSPICIOUS ITEMS SHOULD BE  
SUBMITTED TO THE ANTIQUE PLATE  
COMMITTEE. PLEASE TELEPHONE ASSAY  
OFFICE LONDON ON 020 7606 8971 OR  
EMAIL [INFO@ASSAYOFFICELONDON.CO.UK](mailto:INFO@ASSAYOFFICELONDON.CO.UK)**

This document has been produced as a guide to the characteristics of the fake items, the methods used in faking and the fake hallmarks and should only be used for reference purposes.

PAGE	DATE	MM	OBJECT	ASSAY OFFICE REFERENCE
5	1679	II	Trefid spoon	8425 CMC-31 (ee)
6	1679	AK	Trefid spoon	8450 CMC31 (r/t)
7	1679	IK	Laced-back trefid spoon	8456 CMC-31 (v)
8	1681	LC	Trefid spoon	8414 CMC 26 (e)
9	1681	IL	Trefid spoon	8451 CMC 31 (aa)
10	1682	TZ	Trefid spoon	8497 CMC 36 (i)
11	1682	TS	Trefid spoon	8454 CMC 31 (y)
12	1683	LC	Trefid spoon	8541 CMC 11 (b)
13	1687	IS	Trefid spoon	8523 CMC 10 (c)
14	1688	IC	Trefid spoon	8446 CMC 31 (x)
15	1694	IL	Trefid spoon	8426 CMC 31 (ll)
16	1694	SW	Trefid spoon	8447 CMC 31 (w)
17	1696	TZ	Laced-back trefid spoon	8449 CMC 31 (cc)
18	1696	SW	Trefid spoon	8448 CMC 31 (q/s)
19	1696	IS	Rat tail spoon	8495 CMC 36 (f)
20	1698	AL	Trefid spoon	8433 CMC 31 (nn)
21	1699	CO	Trefid handle	8478 CMC 24 (v)
22	1699	LA	Trefid spoon with engraved back and rat tail	8493 CMC 36 (d)
23	1699	LO	Trefid spoon	8498 CMC 36 (j)
24	1699	SC	Three pronged fork	8483 CMC 24 (aa)
25	1699	SC	Three pronged fork	8472 CMC 24 (p)
26	1702	LA	Dog nosed spoon	8430 CMC 31 (gg)
27	1703	GR	Dog nosed spoon	8428 CMC 31 (ii)
28	1703	LA	Trefid spoon - cast decoration	8490 CMC 36 (a)
29	1703	PE	Dog nosed basting spoon	8442 CMC 31 (a)
30	1704	GI	Dog nosed basting spoon	8441 CMC 31 (b)
31	1704	GI	Trefid spoon	8427 CMC 31 (jj)
32	1704	WA	Dog nosed tablespoon	8515 CMC 36 (bb)
33	1707	DA	Marrow scoop	8439 CMC 31 (f)
34	1707	LA	Dog nosed spoon	8432 CMC 31 (pp)
35	c1709	CO	Tumbler cup	8529 CMC 34 (e)
36	1713	S_?	Rat tail marrow spoon	8513 CMC 36 (z)
37	1728	SW	Marrow scoop	8539 CMC 37
38	c1730	DW?	Coffee pot	8548 CMC 38
39	1745	I_?	Rat tail marrow spoon	8496 CMC 36 (g)
40	1761	-	Onslow pattern soup ladle	8413 CMC 26 (c)
41	1780	IL	Soup ladle	8522 CMC 10 (b)
42	1782	GS	Large Onslow style basting spoon	8521 CMC 10 (a)
43	1884	WG JL	Victorian trefid spoon	8462 CMC 24 (f)
44	1884	WG JL	Victorian trefid spoon	8459 CMC 24 (c)

# ASSAY OFFICE LONDON

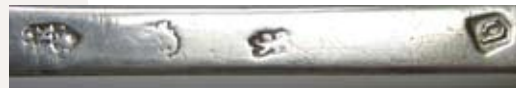
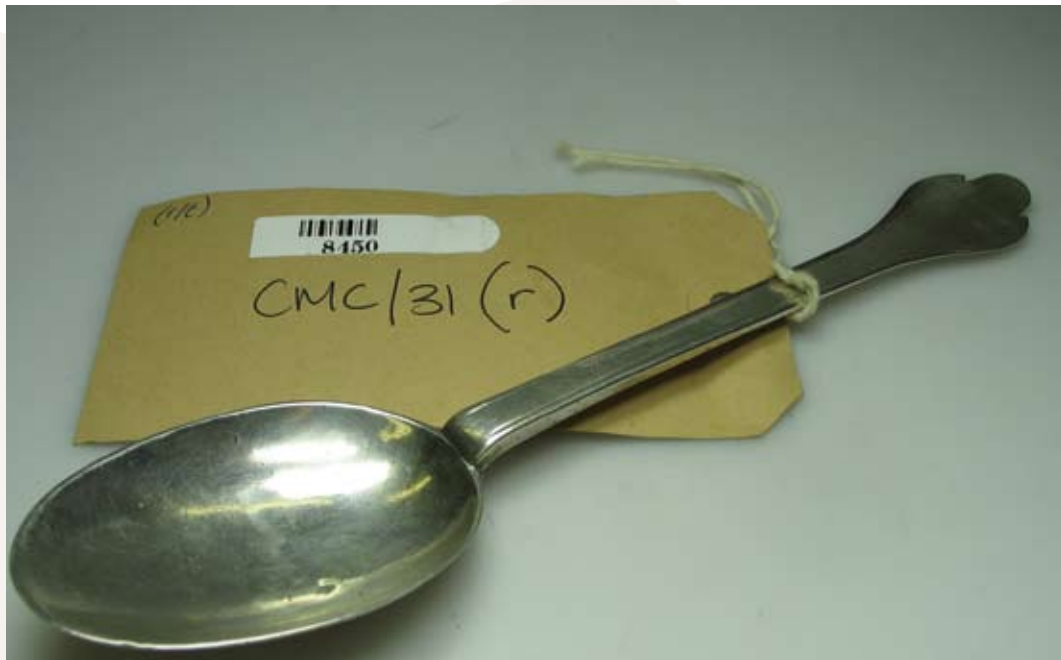
PETER ASHLEY-RUSSELL CASE EXAMPLES



SPONSOR (NAME AND INITIALS)	Il for Jeremy Johnson
DATE LETTER	1679
OBJECT	Trefid spoon
COMMENTS	
ASSAY OFFICE REFERENCE	Assay Office ref: 8425 CMC-31 (ee)

# ASSAY OFFICE LONDON

PETER ASHLEY-RUSSELL CASE EXAMPLES



SPONSOR (NAME AND INITIALS)	AK for Adam King
DATE LETTER	1679
OBJECT	Trefid spoon
COMMENTS	
ASSAY OFFICE REFERENCE	Assay Office ref: 8450 CMC-31 (r/t)

# ASSAY OFFICE LONDON

PETER ASHLEY-RUSSELL CASE EXAMPLES



SPONSOR (NAME AND INITIALS)	IK for John King
DATE LETTER	1679
OBJECT	Laced-back trefid spoon
COMMENTS	
ASSAY OFFICE REFERENCE	Assay Office ref: 8456 CMC-31 (v)

# ASSAY OFFICE LONDON

PETER ASHLEY-RUSSELL CASE EXAMPLES



SPONSOR (NAME AND INITIALS)	LC for Lawrence Coles
DATE LETTER	1681
OBJECT	Trefid spoon
COMMENTS	Foreign silver – lower standard; particularly heavy and good spoon
ASSAY OFFICE REFERENCE	Assay Office ref: 8414 CMC-26 (e)



# ASSAY OFFICE LONDON

PETER ASHLEY-RUSSELL CASE EXAMPLES



SPONSOR (NAME AND INITIALS)	IL
DATE LETTER	1681
OBJECT	Trefid spoon
COMMENTS	
ASSAY OFFICE REFERENCE	Assay Office ref: 8451 CMC-31 (aa)

# ASSAY OFFICE LONDON

PETER ASHLEY-RUSSELL CASE EXAMPLES



SPONSOR (NAME AND INITIALS)	TZ for Thomas Issod
DATE LETTER	1682
OBJECT	Trefid spoon
COMMENTS	
ASSAY OFFICE REFERENCE	Assay Office ref: 8497 CMC-36 (i)

# ASSAY OFFICE LONDON

PETER ASHLEY-RUSSELL CASE EXAMPLES



SPONSOR (NAME AND INITIALS)	TS over a bird
DATE LETTER	1682
OBJECT	Trefid spoon
COMMENTS	
ASSAY OFFICE REFERENCE	Assay Office ref: 8454 CMC-31 (y)

# ASSAY OFFICE LONDON

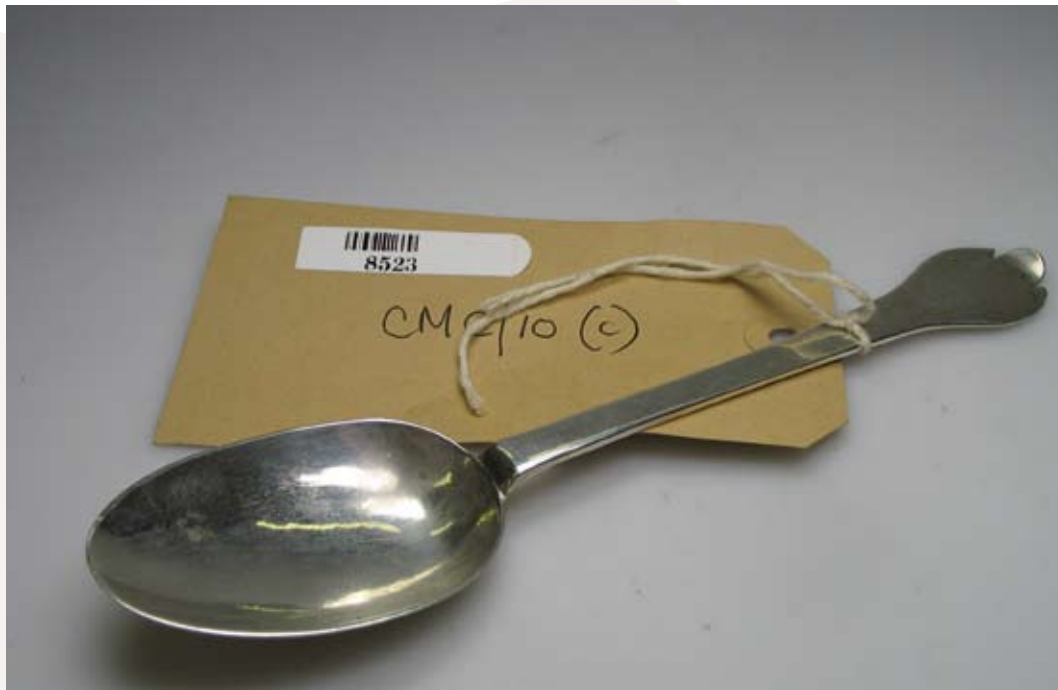
PETER ASHLEY-RUSSELL CASE EXAMPLES



SPONSOR (NAME AND INITIALS)	LC for Lawrence Coles
DATE LETTER	1683
OBJECT	Trefid spoon
COMMENTS	New tip on the end of the spoon, visible solder line, improved leopard's head
ASSAY OFFICE REFERENCE	Assay Office ref: 8541 CMC-11 (b)

# ASSAY OFFICE LONDON

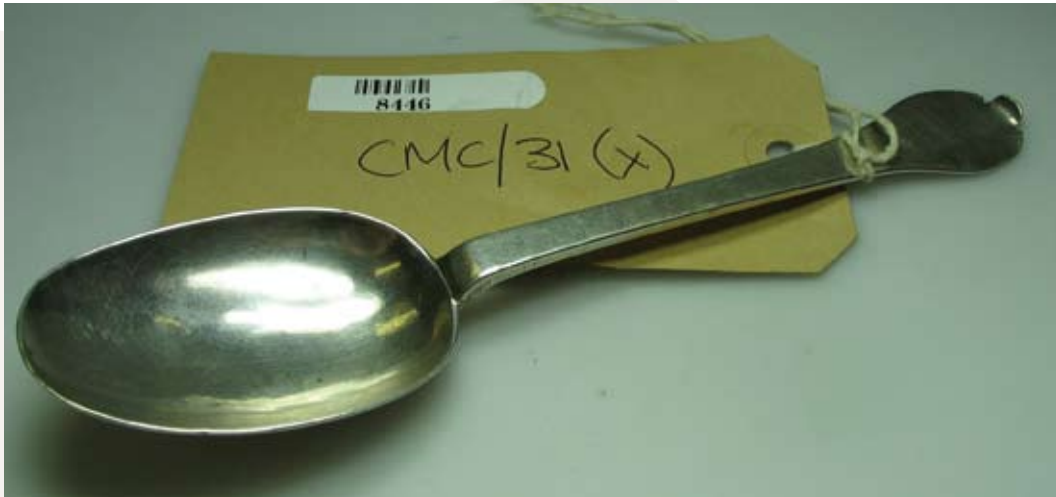
PETER ASHLEY-RUSSELL CASE EXAMPLES



SPONSOR (NAME AND INITIALS)	IS beneath a crown for John Smith
DATE LETTER	1687
OBJECT	Trefid spoon
COMMENTS	Bowl tied up; too pointy – angle is too pointed; flooded or buffed maker's mark near bowl
ASSAY OFFICE REFERENCE	Assay Office ref: 8523 CMC-10 (c)

# ASSAY OFFICE LONDON

PETER ASHLEY-RUSSELL CASE EXAMPLES



SPONSOR (NAME AND INITIALS)	IC with pellet above and two below with rose for John Clifton
DATE LETTER	1688
OBJECT	Trefid spoon
COMMENTS	
ASSAY OFFICE REFERENCE	Assay Office ref: 8446 CMC-31 (x)

# ASSAY OFFICE LONDON

PETER ASHLEY-RUSSELL CASE EXAMPLES



SPONSOR (NAME AND INITIALS)	IL
DATE LETTER	1694
OBJECT	Trefid spoon
COMMENTS	
ASSAY OFFICE REFERENCE	Assay Office ref: 8426 CMC-31 (II)

# ASSAY OFFICE LONDON

PETER ASHLEY-RUSSELL CASE EXAMPLES



SPONSOR (NAME AND INITIALS)	W over S for William Scarlett
DATE LETTER	1694
OBJECT	Trefid spoon
COMMENTS	
ASSAY OFFICE REFERENCE	Assay Office ref: 8447 CMC-31 (w)



# ASSAY OFFICE LONDON

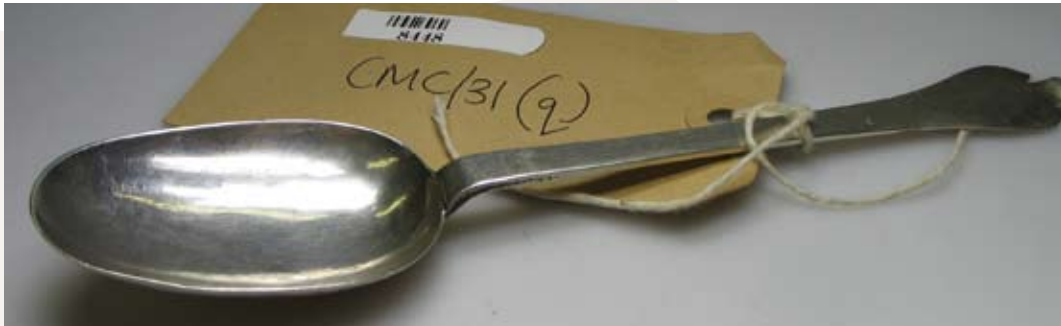
PETER ASHLEY-RUSSELL CASE EXAMPLES



SPONSOR (NAME AND INITIALS)	TZ for Thomas Issod
DATE LETTER	1696
OBJECT	Laced-back trefid spoon
COMMENTS	
ASSAY OFFICE REFERENCE	Assay Office ref: 8449 CMC-31 (cc)

# ASSAY OFFICE LONDON

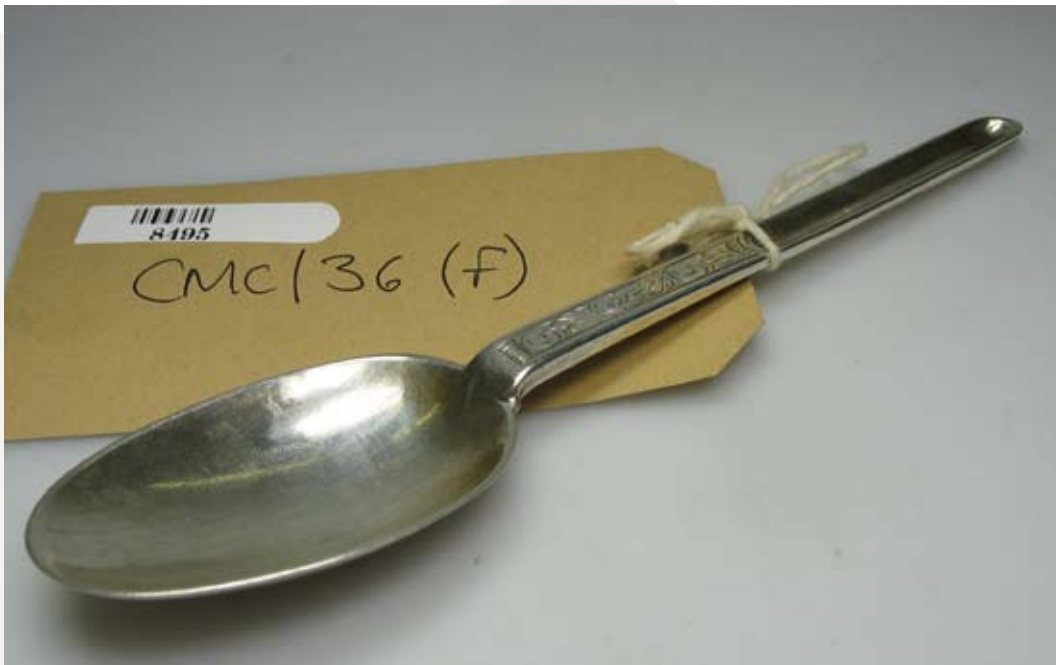
PETER ASHLEY-RUSSELL CASE EXAMPLES



SPONSOR (NAME AND INITIALS)	S over W for William Scarlett
DATE LETTER	1696
OBJECT	Trefid spoon
COMMENTS	
ASSAY OFFICE REFERENCE	Assay Office ref: 8448 CMC-31 (q/s)

# ASSAY OFFICE LONDON

PETER ASHLEY-RUSSELL CASE EXAMPLES



SPONSOR (NAME AND INITIALS)	IS for John Smith
DATE LETTER	1696
OBJECT	Rat tail spoon
COMMENTS	
ASSAY OFFICE REFERENCE	Assay Office ref: 8495 CMC-36 (f)

# ASSAY OFFICE LONDON

PETER ASHLEY-RUSSELL CASE EXAMPLES



SPONSOR (NAME AND INITIALS)	AL for Thomas Allen
DATE LETTER	1698
OBJECT	Trefid spoon
COMMENTS	Unusual to see with only date letter
ASSAY OFFICE REFERENCE	Assay Office ref: 8433 CMC-31 (nn)

# ASSAY OFFICE LONDON

PETER ASHLEY-RUSSELL CASE EXAMPLES



SPONSOR (NAME AND INITIALS)	CO for George Cox
DATE LETTER	1699
OBJECT	Trefid handle
COMMENTS	Tried to sell it as a lace-back trefid
ASSAY OFFICE REFERENCE	Assay Office ref: 8478 CMC-24 (v)

# ASSAY OFFICE LONDON

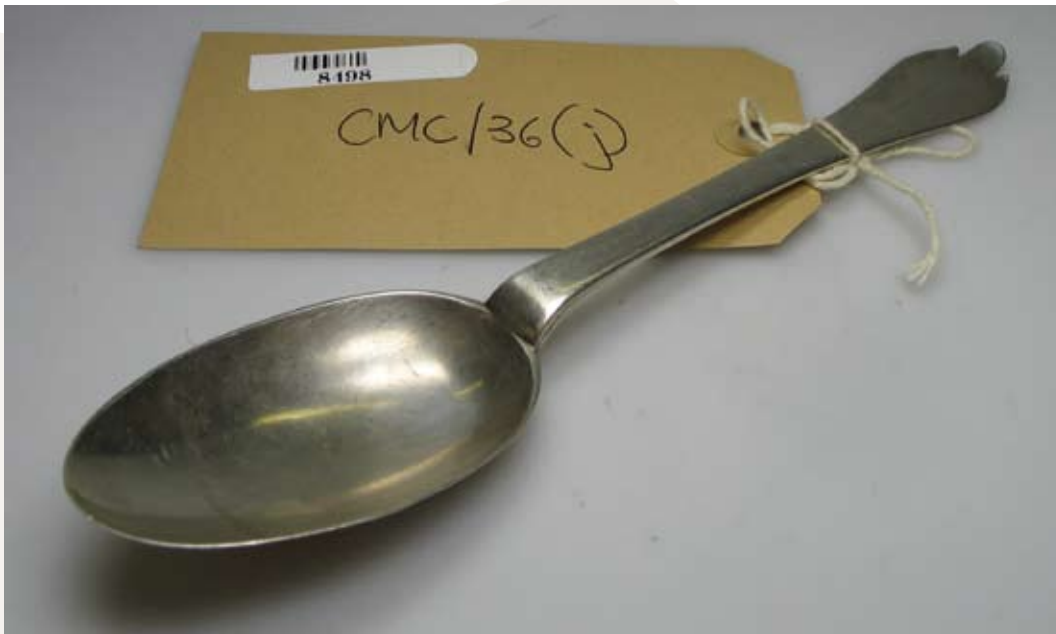
PETER ASHLEY-RUSSELL CASE EXAMPLES



SPONSOR (NAME AND INITIALS)	LA for John Ladyman
DATE LETTER	1699
OBJECT	Trefid spoon with engraved back and rat tail
COMMENTS	
ASSAY OFFICE REFERENCE	Assay Office ref: 8493 CMC-36 (d)

# ASSAY OFFICE LONDON

PETER ASHLEY-RUSSELL CASE EXAMPLES



SPONSOR (NAME AND INITIALS)	LO a cinquefoil below for John Lofthouse
DATE LETTER	1699
OBJECT	Trefid spoon
COMMENTS	
ASSAY OFFICE REFERENCE	Assay Office ref: 8498 CMC-36 (j)

# ASSAY OFFICE LONDON

PETER ASHLEY-RUSSELL CASE EXAMPLES



SPONSOR (NAME AND INITIALS)	SC for William Scarlett
DATE LETTER	1699
OBJECT	Three pronged fork
COMMENTS	
ASSAY OFFICE REFERENCE	Assay Office ref: 8483 CMC-24 (aa)



# ASSAY OFFICE LONDON

PETER ASHLEY-RUSSELL CASE EXAMPLES



SPONSOR (NAME AND INITIALS)	SC for William Scarlett
DATE LETTER	1699
OBJECT	Three pronged fork
COMMENTS	
ASSAY OFFICE REFERENCE	Assay Office ref: 8472 CMC-24 (p)

# ASSAY OFFICE LONDON

PETER ASHLEY-RUSSELL CASE EXAMPLES



SPONSOR (NAME AND INITIALS)	LA crowned for John Ladyman
DATE LETTER	1702
OBJECT	Dog nosed spoon
COMMENTS	
ASSAY OFFICE REFERENCE	Assay Office ref: 8430 CMC-31 (gg)

# ASSAY OFFICE LONDON

PETER ASHLEY-RUSSELL CASE EXAMPLES



SPONSOR (NAME AND INITIALS)	GR for Henry Green
DATE LETTER	1703
OBJECT	Dog nosed spoon
COMMENTS	
ASSAY OFFICE REFERENCE	Assay Office ref: 8428 CMC-31 (ii)

# ASSAY OFFICE LONDON

PETER ASHLEY-RUSSELL CASE EXAMPLES



SPONSOR (NAME AND INITIALS)	LA crowned for John Ladyman
DATE LETTER	1703
OBJECT	Trefid spoon with cast decoration
COMMENTS	
ASSAY OFFICE REFERENCE	Assay Office ref: 8490 CMC-36 (a)

# ASSAY OFFICE LONDON

PETER ASHLEY-RUSSELL CASE EXAMPLES



SPONSOR (NAME AND INITIALS)	PE for William Petley
DATE LETTER	1703
OBJECT	Dog nosed basting spoon
COMMENTS	
ASSAY OFFICE REFERENCE	Assay Office ref: 8442 CMC-31 (a)

# ASSAY OFFICE LONDON

PETER ASHLEY-RUSSELL CASE EXAMPLES



SPONSOR (NAME AND INITIALS)	GI for Edward Gibson
DATE LETTER	1704
OBJECT	Dog nosed basting spoon
COMMENTS	
ASSAY OFFICE REFERENCE	Assay Office ref: 8441 CMC-31 (b)

# ASSAY OFFICE LONDON

PETER ASHLEY-RUSSELL CASE EXAMPLES



SPONSOR (NAME AND INITIALS)	GI for Edward Gibson
DATE LETTER	1704
OBJECT	Trefid spoon
COMMENTS	
ASSAY OFFICE REFERENCE	Assay Office ref: 8427 CMC-31 (jj)

# ASSAY OFFICE LONDON

PETER ASHLEY-RUSSELL CASE EXAMPLES



SPONSOR (NAME AND INITIALS)	WA a stag's head above for Benjamin Watts
DATE LETTER	1704
OBJECT	Dog nosed tablespoon
COMMENTS	
ASSAY OFFICE REFERENCE	Assay Office ref: 8515 CMC-36 (bb)



# ASSAY OFFICE LONDON

PETER ASHLEY-RUSSELL CASE EXAMPLES



SPONSOR (NAME AND INITIALS)	DA for Isaac Davenport
DATE LETTER	1707
OBJECT	Marrow scoop
COMMENTS	
ASSAY OFFICE REFERENCE	Assay Office ref: 8439 CMC-31 (f)

# ASSAY OFFICE LONDON

PETER ASHLEY-RUSSELL CASE EXAMPLES



SPONSOR (NAME AND INITIALS)	LA crowned for John Ladyman
DATE LETTER	1707
OBJECT	Dog nosed spoon
COMMENTS	
ASSAY OFFICE REFERENCE	Assay Office ref: 8432 CMC-31 (pp)

# ASSAY OFFICE LONDON

PETER ASHLEY-RUSSELL CASE EXAMPLES



SPONSOR (NAME AND INITIALS)	CO for George Cox
DATE LETTER	c.1709
OBJECT	Tumbler cup
COMMENTS	
ASSAY OFFICE REFERENCE	Assay Office ref: 8529 CMC-34 (e)

# ASSAY OFFICE LONDON

PETER ASHLEY-RUSSELL CASE EXAMPLES



SPONSOR (NAME AND INITIALS)	S_?
DATE LETTER	1713
OBJECT	Rat tail marrow spoon
COMMENTS	
ASSAY OFFICE REFERENCE	Assay Office ref: 8513 CMC-36 (z)

# ASSAY OFFICE LONDON

PETER ASHLEY-RUSSELL CASE EXAMPLES



SPONSOR (NAME AND INITIALS)	WS for William Soame
DATE LETTER	1728
OBJECT	Marrow scoop
COMMENTS	
ASSAY OFFICE REFERENCE	Assay Office ref: 8539 CMC-37

# ASSAY OFFICE LONDON

PETER ASHLEY-RUSSELL CASE EXAMPLES



SPONSOR (NAME AND INITIALS)	DW? David Willaume?
DATE LETTER	c.1730
OBJECT	Coffee pot
COMMENTS	
ASSAY OFFICE REFERENCE	Assay Office ref: 8548 CMC-38

# ASSAY OFFICE LONDON

PETER ASHLEY-RUSSELL CASE EXAMPLES



SPONSOR (NAME AND INITIALS)	I_?
DATE LETTER	c.1745
OBJECT	Rat tail marrow spoon
COMMENTS	
ASSAY OFFICE REFERENCE	Assay Office ref: 8496 CMC-36 (g)

# ASSAY OFFICE LONDON

PETER ASHLEY-RUSSELL CASE EXAMPLES



SPONSOR (NAME AND INITIALS)	Illegible
DATE LETTER	1761
OBJECT	Onslow pattern soup ladle
COMMENTS	
ASSAY OFFICE REFERENCE	Assay Office ref: 8413 CMC-26 (c)



# ASSAY OFFICE LONDON

PETER ASHLEY-RUSSELL CASE EXAMPLES



SPONSOR (NAME AND INITIALS)	IL a star between for John Lambe
DATE LETTER	1780
OBJECT	Soup ladle
COMMENTS	
ASSAY OFFICE REFERENCE	Assay Office ref: 8522 CMC-10 (b)

# ASSAY OFFICE LONDON

PETER ASHLEY-RUSSELL CASE EXAMPLES



SPONSOR (NAME AND INITIALS)	GS in script for George Smith
DATE LETTER	1782
OBJECT	Large Onslow style basting spoon
COMMENTS	
ASSAY OFFICE REFERENCE	Assay Office ref: 8521 CMC-10 (a)

# ASSAY OFFICE LONDON

PETER ASHLEY-RUSSELL CASE EXAMPLES



SPONSOR (NAME AND INITIALS)	WG over JL for Gibson and Langman
DATE LETTER	1884
OBJECT	Victorian trefid spoon
COMMENTS	Britannia silver spoon for alteration to earlier form
ASSAY OFFICE REFERENCE	Assay Office ref: 8462 CMC-24 (f)

# ASSAY OFFICE LONDON

PETER ASHLEY-RUSSELL CASE EXAMPLES



SPONSOR (NAME AND INITIALS)	WG over JL for Gibson and Langman
DATE LETTER	1884
OBJECT	Victorian trefid spoon
COMMENTS	Britannia silver spoon for alteration to earlier form
ASSAY OFFICE REFERENCE	Assay Office ref: 8459 CMC-24 (c)

# EXAMPLES OF FAKE PUNCHES

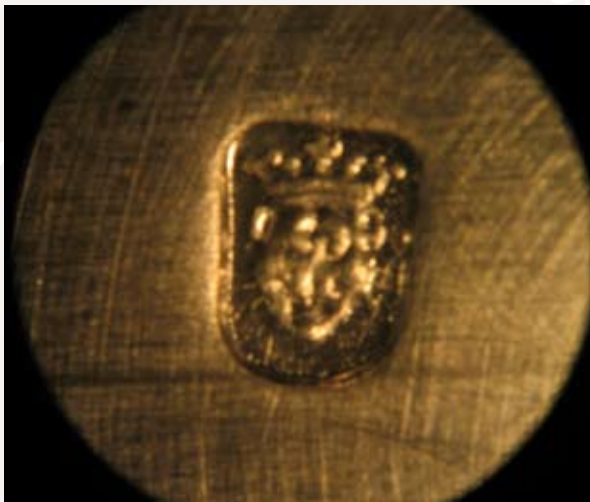
LEOPARD'S HEAD AND LION PASSANT



Leopard's head crowned before 1697



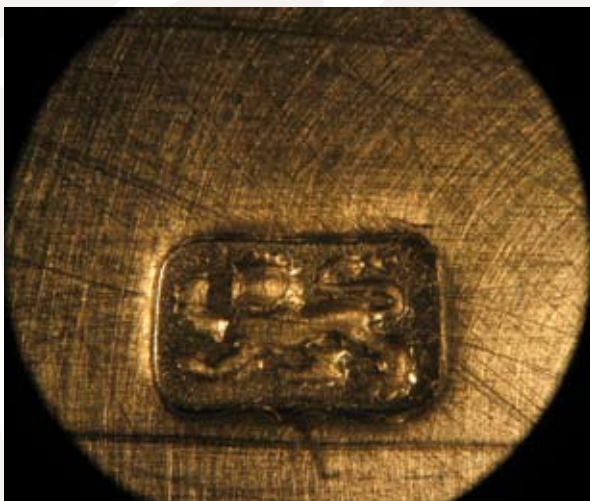
Leopard's head crowned before 1697



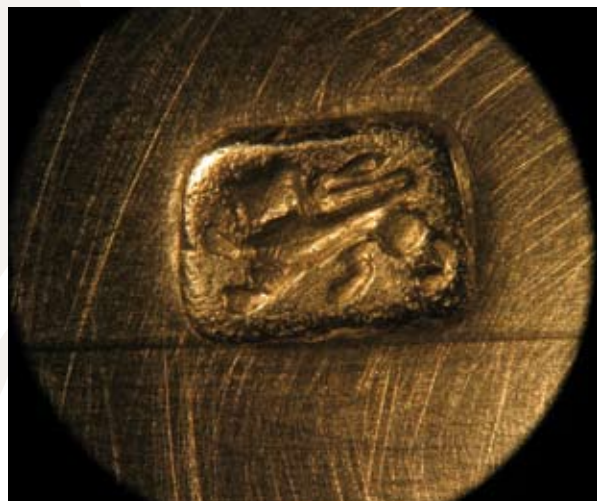
Leopard's head crowned after 1756



Leopard's head crowned after 1756



Lion passant guardant pre 1697



Lion passant guardant

# EXAMPLES OF FAKE PUNCHES

L I O N ' S H E A D E R A S E D A N D B R I T A N N I A



Lion's head erased



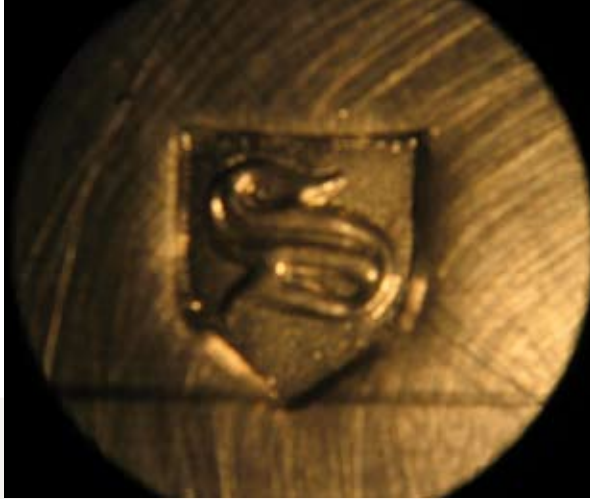
Britannia



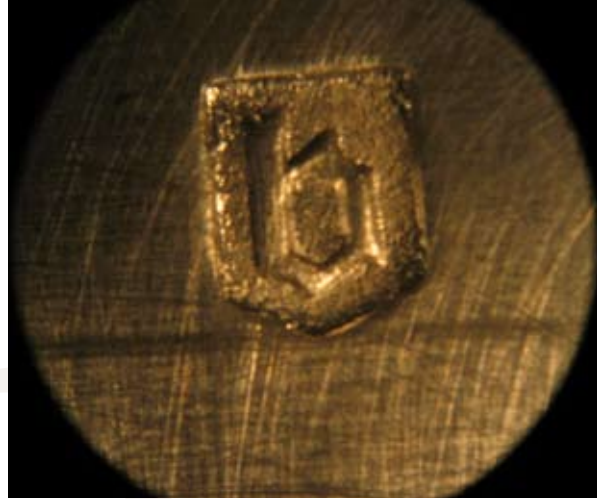
Britannia

# EXAMPLES OF FAKE PUNCHES

DATE LETTERS



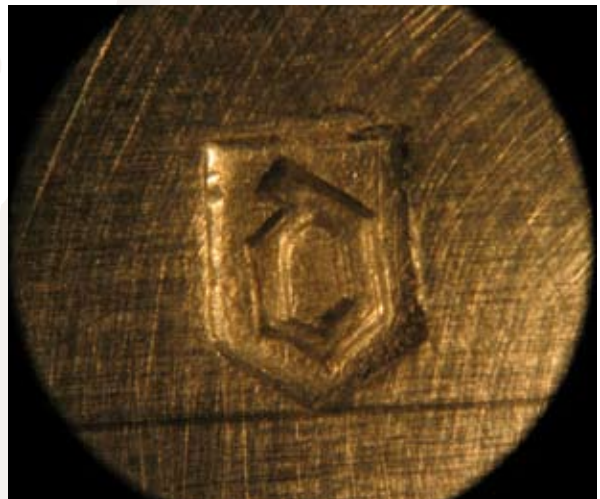
S for 1675



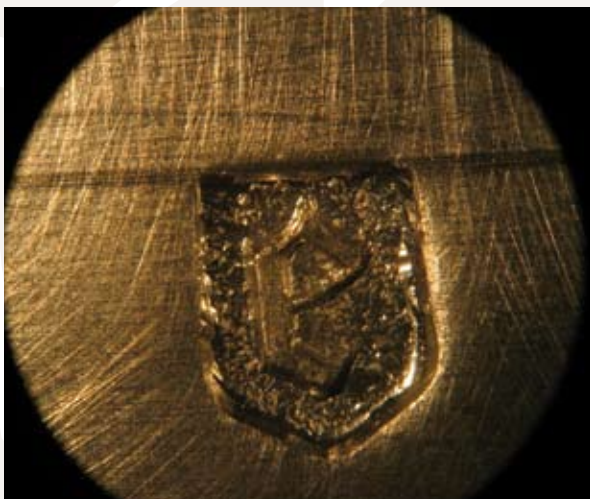
b for 1679



c for 1680



d for 1681



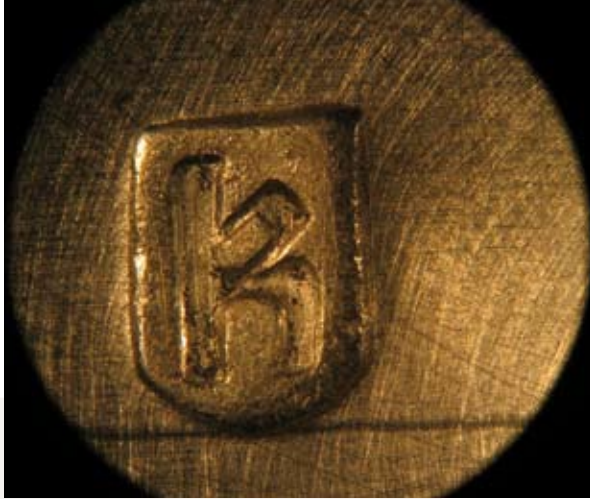
e for 1682



f for 1683

# EXAMPLES OF FAKE PUNCHES

DATE LETTERS



k for 1687



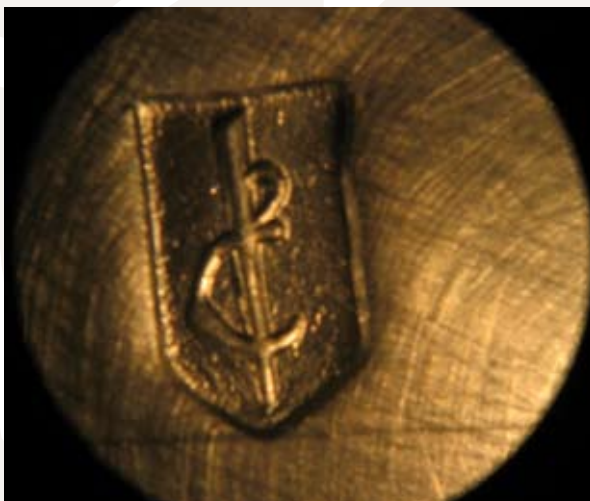
r for 1694



t for 1696-97



d for 1699



e for 1700



g for 1702



# EXAMPLES OF FAKE PUNCHES

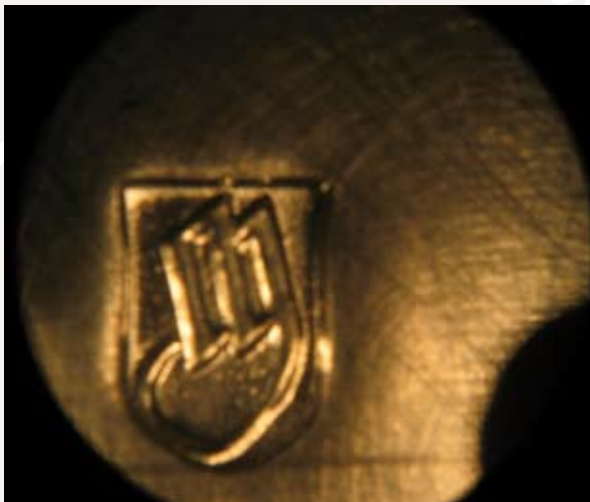
DATE LETTERS



h for 1703



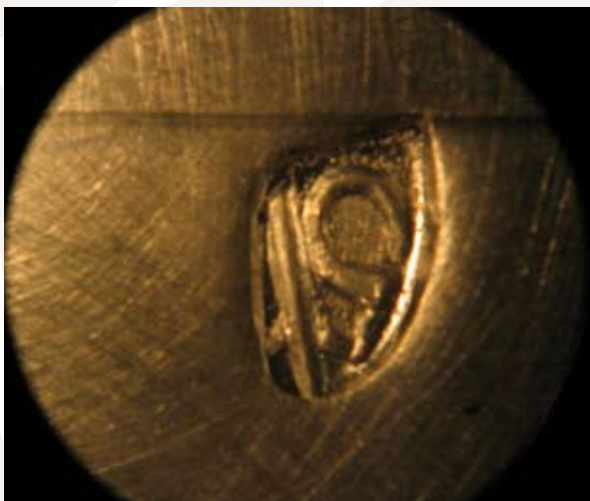
i for 1704



m for 1707



o for 1709



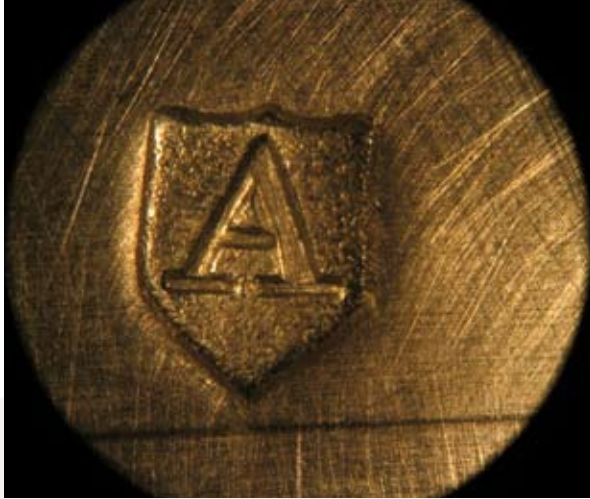
p for 1710



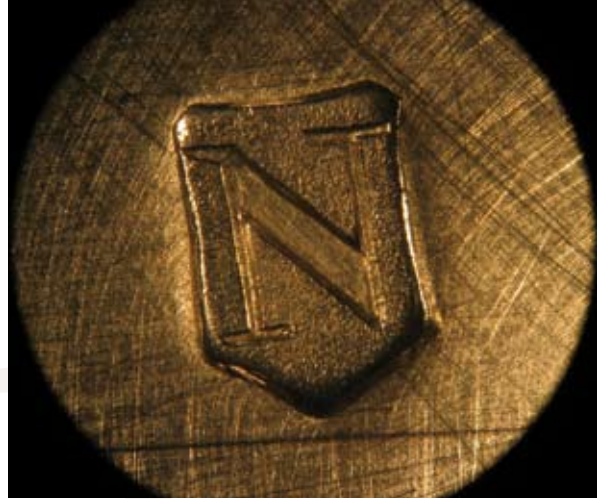
u for 1715

# EXAMPLES OF FAKE PUNCHES

DATE LETTERS



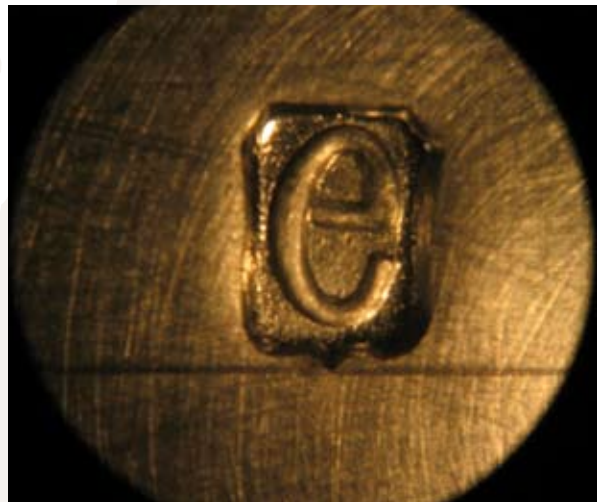
A for 1716



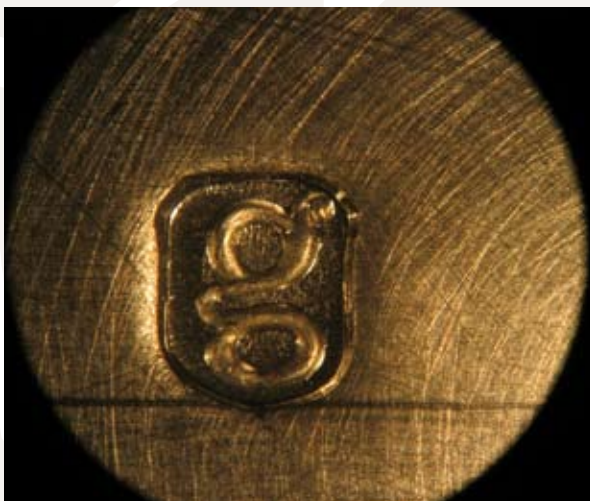
N for 1728



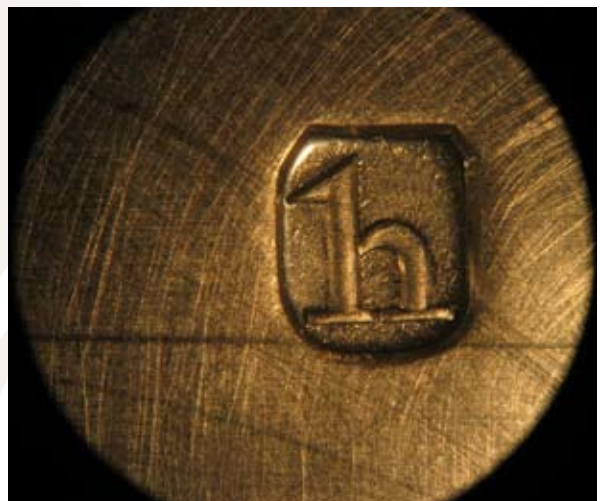
b for 1777



e for 1780



g for 1782



h for 1783

# EXAMPLES OF FAKE PUNCHES

SPONSOR'S MARKS



AR for Appolone Rudkins



CO for George Cox



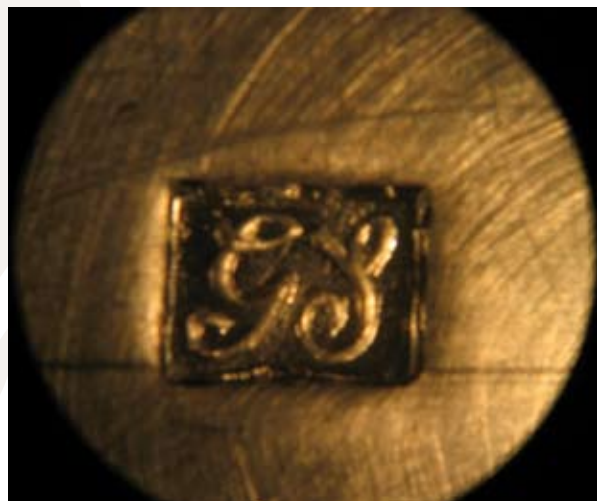
DA for Isaac Davenport



GI for Edward Gibson



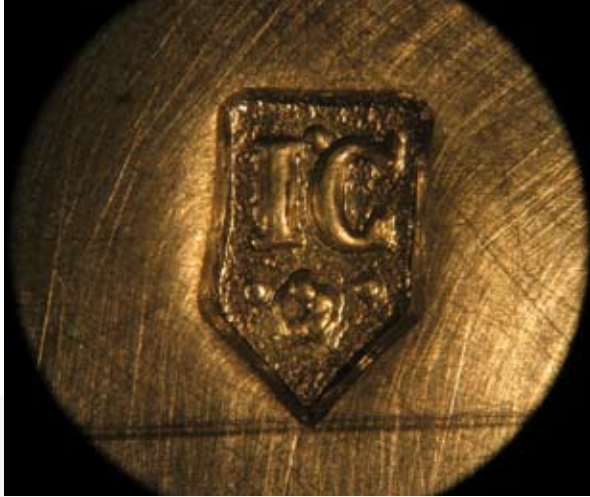
GR for Henry Green



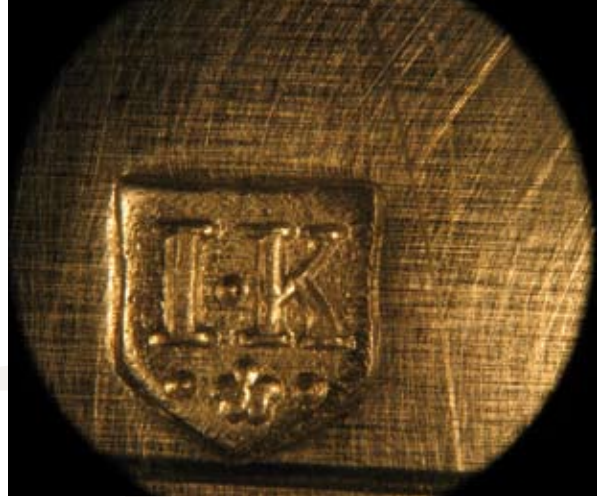
GS for George Smith

# EXAMPLES OF FAKE PUNCHES

SPONSOR'S MARKS



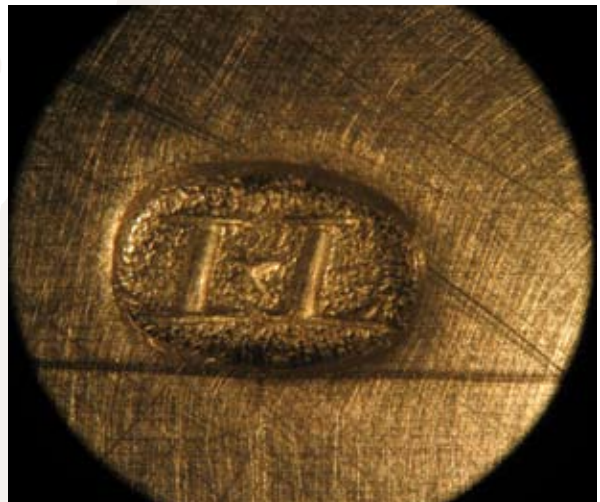
IC for John Clifton



IK for John King



IL



IL for John Lamb



IS for John Smith



IS for John Smith

# EXAMPLES OF FAKE PUNCHES

SPONSOR'S MARKS



LA for John Ladyman



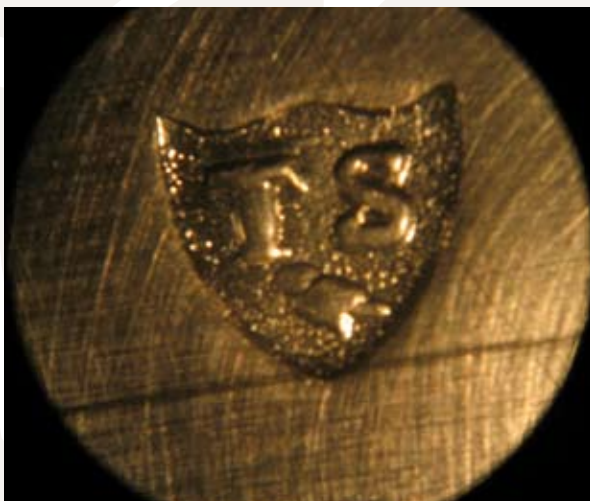
LC for Lawrence Coles



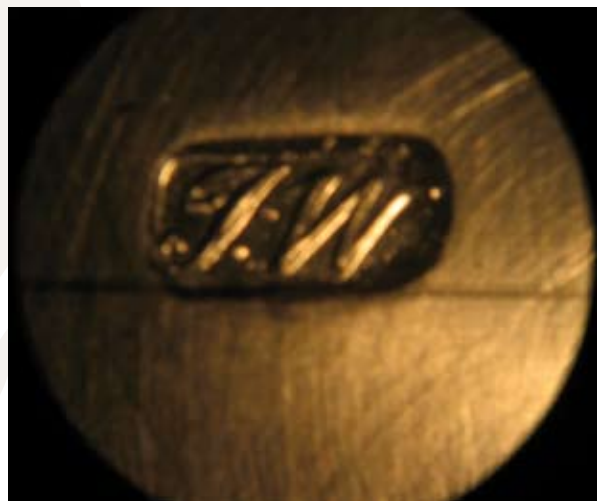
LO for Seth Lofthouse



SC for William Scarlett (c.1697)



TS over a bird



TW in script

# EXAMPLES OF FAKE PUNCHES

SPONSOR'S MARKS



TZ for Thomas Issod



W over S for William Scarlett