



Hallmark of
The Goldsmiths' Company
since 1300



The
GOLDSMITHS'
Company

ASSAY OFFICE

Hallmarking Services



Where hallmarking began



At the Goldsmiths' Company Assay Office, we've been hallmarking precious metal items since 1327, when we first received our Royal Charter. Originally only items of gold and silver were required to be hallmarked, with the introduction of platinum and palladium in recent years.

This leaflet has been designed to introduce you to what we do, how we go about it, and how we've managed to stay at the forefront of hallmarking for centuries.

HALLMARKS AND HALLMARKING SERVICES

Current legal hallmarks

A full UK hallmark tells you who made the item, what metal it's made of, and where and when it was hallmarked. It can be applied in a number of ways and formats.

The minimum requirement for a legal hallmark comprises three compulsory marks:



The mark most commonly applied by the Goldsmiths' Company Assay Office is the traditional UK mark:

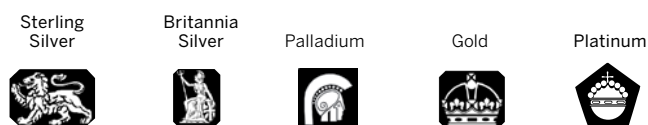


Sponsor's mark

The sponsor's or maker's mark is the registered mark of the person or company who designed, made or sold the item.

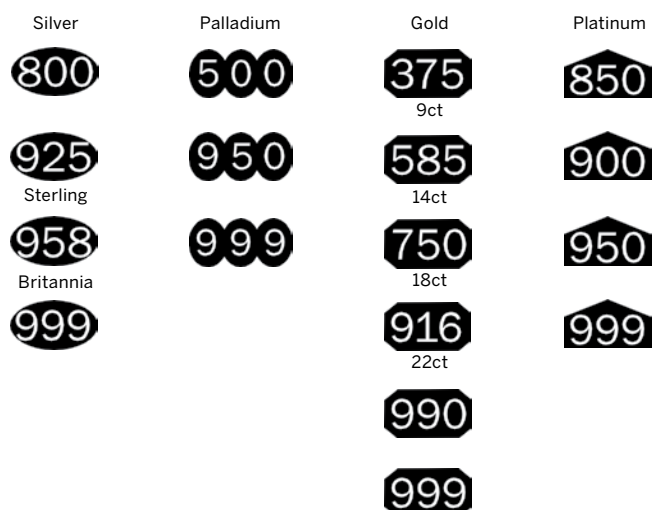
Traditional fineness mark

There is a different traditional fineness mark for each precious metal:



Millesimal fineness mark

The millesimal fineness mark signifies the precious metal content in parts per thousand. The different precious metals are distinguished by a different shaped outline:



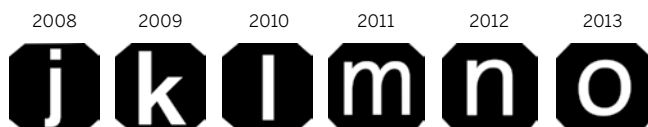
Assay office mark

The assay office mark indicates the assay office that hallmarked the item. The leopard's head signifies London, the anchor for Birmingham, the rose for Sheffield and the castle for Edinburgh.



The date letter

The date letter changes yearly on the 1st January. It indicates the year in which the item was hallmarked. Below is a small selection of past and current date letter marks:



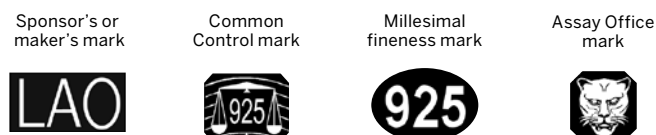
Common control and convention marks

The UK has been a signatory to the International Convention on Hallmarks since 1972. A Convention Hallmark struck by the UK Assay Offices will be recognised by all member countries in the International Convention. Similarly, Convention Hallmarks from other member countries are legally recognised in the UK.

Articles bearing the Convention Hallmark do not have to be re-hallmarked in the UK. Finenesses recognised under the Convention are:

Silver	800, 925, 999
Palladium	500, 950, 999
Gold	375, 585, 750, 916, 990, 999
Platinum	850, 900, 950, 999

A Convention Hallmark comprises four marks:



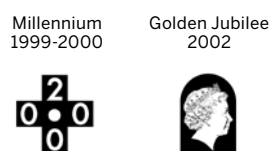
There is a different common control mark for each metal:



More information on the International Convention on Hallmarks, its members and the current legal hallmarks can be found in the Download Centre on our website at www.assayofficelondon.co.uk.

Commemorative marks

These are marks that are struck in order to commemorate a special event.



HALLMARKS AND HALLMARKING SERVICES

Types of marks

Traditional struck marks

Made with a punch, creating an impression by moving (forming) the metal:

- Handmarking is the most traditional method whereby the article is struck by hand using a punch and hammer
- Pressmarking is essentially an automated version of handmarking



Struck mark

Modern laser hallmarking

A very fine high-powered laser beam is used to melt and vaporise material, creating a detailed mark, akin to etching. Ideal for hallmarking hollow or thin articles or for marking logos, signatures, serial numbers and stone weights.

We offer two different types of laser hallmark:

- 2D laser mark: resembles the outline of a struck mark
- 3D laser mark: a premium quality hallmark that resembles a struck mark

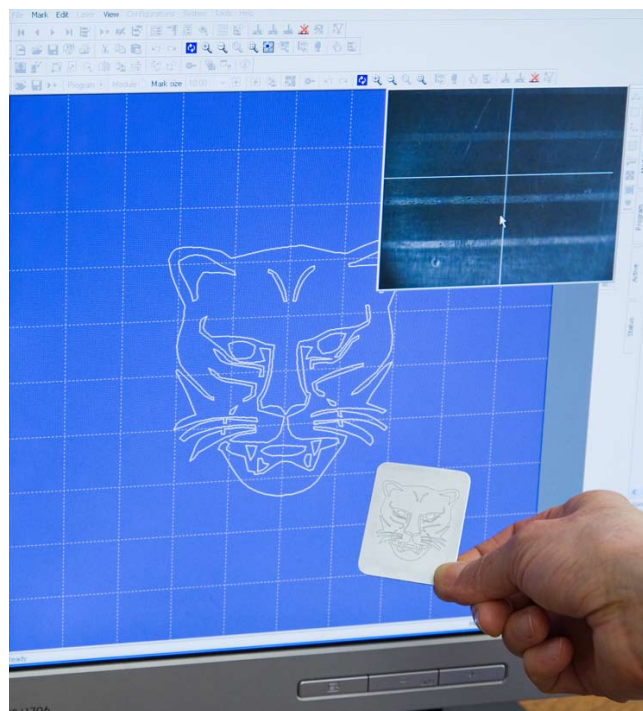
Both marks are available in sizes A (6mm) to M (0.5mm).



2D



3D



Benefits of laser hallmarking

Articles that have been laser hallmarked don't require any setting back because it is an etching process. It's ideal for hollow or thin items and when minimum finishing is required. What's more, unlike traditional hallmarks, 3D hallmarks retain excellent definition even after heavy polishing. Logos, signatures, serial numbers and the like are also made possible with a laser.

Items suitable for laser hallmarking

Due to its limited depth of focus, laser hallmarking is ideal for flat surfaces, like watch backs, photo frames, tops of cufflinks and flat areas on large wares. Marking on curved surfaces is possible when the radius of curvature is sufficiently shallow to maintain focus (a smaller size/length mark often helps for these articles).

Large bangles and bracelets can usually be marked but rings and other articles with a tight radius of curvature may be limited to very small marks.

Size guide

Standard hallmarks are available in sizes 0.5mm to 6mm (height).

The table below outlines the recommended sizes for struck marks. Please note that the mark will appear slightly larger once struck into the metal.

Laser marks are also available at the same sizes outlined below. However, due to the difference in application, laser marks can be applied to items at a larger size than the recommended struck marks.

		SIZE	ITEM DESCRIPTION
A	LAQ925 	6.00mm	Large silver holloware
B	LAQ925 	5.00mm	
C	LAQ925 	4.00mm	
D	LAQ925 	3.50mm	Small silver holloware
E	LAQ925 	3.00mm	
F	LAQ925 	2.50mm	
G	LAQ925 	2.00mm	
H	LAQ925 	1.75mm	Napkin rings, frames
I	LAQ925 	1.50mm	
J	LAQ925 	1.25mm	
K	LAQ925 	1.00mm	Solid bangles, large jewellery Rings
L	LAQ925 	0.75mm	
M	LAQ925 	0.50mm	Small jewellery, rings

This table is for guidance of the height of the mark only and does not reflect the length.



HALLMARKS AND HALLMARKING SERVICES

Normal mark

The normal mark formation applied by the Assay Office is a horizontal mark with minimal spacing between the marks.



Feature marks

Other formations ('feature marks') are permissible, at an extra cost.

Spaced mark



Staggered mark



Spot staggered mark



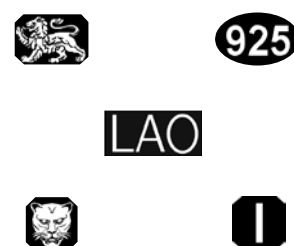
Spot mark no. 1



Vertical spaced mark



Spot mark no. 2



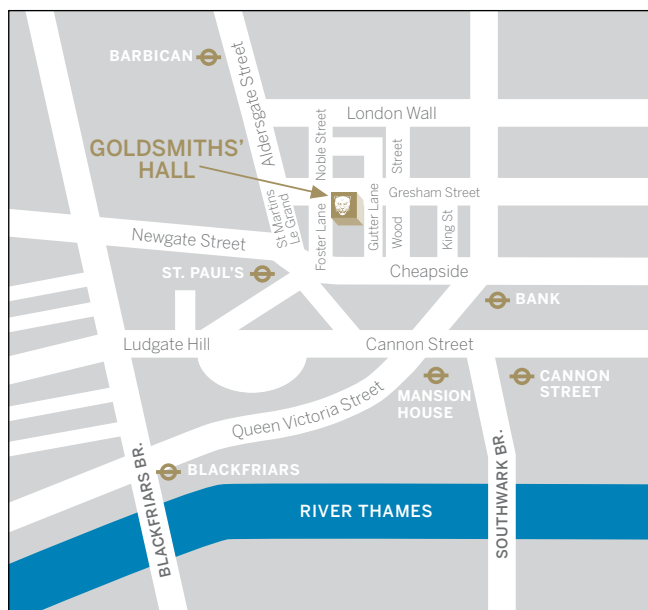
HALLMARKS AND HALLMARKING SERVICES

Locations

At the Goldsmiths' Company Assay Office, we have state-of-the-art offices in three convenient locations around London.

Goldsmiths' Hall:

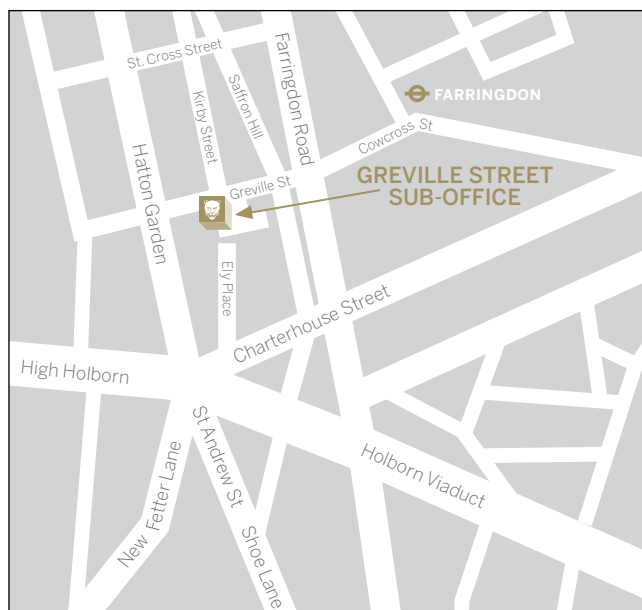
- Our flagship office, where hallmarking began almost 700 years ago
- Offers our full range of services
- The location of our high-tech laboratory



Goldsmiths' Hall
Gutter Lane
London
EC2V 8AQ
8.00am-5.00pm, Monday to Friday
Closed Bank Holidays

Greville Street sub-office:

- Specialises in priority hallmarking services for small quantities of items
- Conveniently sited for the local community of Hatton Garden



17 Greville Street
Hatton Garden
London
EC1N 8SQ
9.00am-5.00pm, Monday to Friday
Closed Bank Holidays

Heathrow sub-office:

- Provides a premium through-packet hallmarking service from plane to distributor with greater efficiency and lower security risks for importers and exporters
- Use of this office is by prior arrangement

Getting in contact

For further information about any of our offices or services, please contact us on:

T: 020 7606 8971

F: 020 7814 9353

info@assayofficelondon.co.uk

www.assayofficelondon.co.uk

Which office?

	Goldsmiths' Hall	Greville Street Sub-Office	Heathrow Sub-Office
Postal service	✓		
Customer drop-off	✓	✓	
Direct packets	✓		✓
Large quantities (over 10)	✓		✓
Lab services (smelt & assay)	✓	✓ (drop off only)	
International distribution	✓		✓
Priority services	✓	✓	✓
Valuation	✓	✓ (drop off only)	
Educational seminars	✓		
Trading Standards Liaison	✓		
Expert services	✓		

Levels of service

We offer a range of hallmarking services to meet the varying needs of all our customers. With three convenient locations and three priority services, you can be assured that if you need to get something hallmarked in a hurry, the Assay Office can deliver.

Standard service

Turnaround for the standard hallmarking service is typically 3-4 working days.

One hour service**

Get up to five items hallmarked within one hour. Items can be laser or hand marked with the application of the sponsor's mark and additional marking, such as logos and display marks included in the cost.

- Available at Goldsmiths' Hall and Greville Street
- Cost: £50.00 for up to five items**

Same day service#

Items brought in by 10am will be ready for collection by 4pm. This service is available for a maximum of ten items.

- Available at Goldsmiths' Hall and Greville Street
- Cost: 100% on top of the standard hallmarking charges**

Early hall service#

This next day service is available for up to 30 items

- Available at all offices
- Cost: 50% on top of the standard hallmarking charges**

Important

When using a priority service, 'Early Hall', 'Same Day' or 'One Hour' should be clearly marked on the outside of the packet.

Packets must only contain items of the same fineness, different finenesses will be charged as a separate packet and should be submitted on a separate hallnote as standard assay procedure. A pair of earrings/cufflinks counts as two items.

Packet tracking and payment options

Using the latest technology packets can be tracked and paid for online at www.assayofficelondon.co.uk. Other payment method include cash, cheque or card.

Please refer to the document 'Getting Your Items Hallmarked' for full details.

* Available for goods delivered by hand at the counter only. With prior arrangement and at the total discretion of the Goldsmiths' Company Assay Office, it is possible that more than five items may be hallmarked and will be charged at £10 per additional item.

** All charges are subject to VAT.

Items can only be submitted to the office that holds your sponsor's mark punch.

Please refer to our Full Terms & Conditions which can be downloaded from our website at: www.assayofficelondon.co.uk

